

vote!

Oregon

general guidelines

- **Do not** summarize, edit, or make comments that are meant to **coerce** or **persuade** the voter when reading materials to the voter.
- **Do not** try to **influence** the person you are assisting to choose or not choose a particular political party.
- **Do not** try to **influence** the person you are assisting to vote their ballot in a particular way.
- **Do not display** things that suggest a political preference or party allegiance.
- **Do not wear** anything that would reasonably be understood to be associated with a past, present or future political party or political preference.

📍 www.oregonvotes.gov

☎️ 1 866 673 VOTE / 673 8683
se habla español

TTY 1 800 735 2900
for the hearing impaired

Your County Elections Office can suggest resources that you can use to help inform voters.

Resources must be non-partisan and unbiased.

☎️ **Call** your County Elections Office to learn about resources.

who can provide assistance?

- A County Voter Assistance Team
- A Facility Voter Assistance Team
- Someone chosen by the voter with some exceptions (see below)

who cannot provide assistance?

- The voter's employer
- An agent of the voter's employer
- A union officer or agent of a union of which the voter is a member

what is a facility voter assistance team?

A **congregate living facility** may form a Facility Assistance Team to assist voters living in their facility.

Teams must be made up of **two registered voters** that are not of the same political party.

! All congregate living facilities should let their residents know that assistance is available to them.

vote!

Oregon

← I want to assist a voter

↓ I need assistance to vote

Any Oregon voter can get assistance to

- **register** to vote
- **vote** their ballot
- **return their ballot**

☎️ **Call** your County Elections Office or **1 866 673 VOTE / 673 8683** to get assistance.

You can also get help from a care provider, family member or someone else you choose.

📍 www.oregonvotes.gov

☎️ 1 866 673 VOTE / 673 8683
se habla español

TTY 1 800 735 2900
for the hearing impaired

Assist a voter

Assist a voter to register

The voter can register to vote at:

- oregonvotes.org
- any County Elections Office
- the Secretary of State's Office
- any Department of Motor Vehicles (DMV)

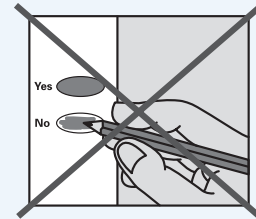
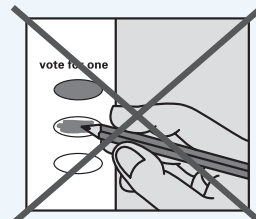
! Do not try to influence the person you are assisting to choose or not choose a particular political party.

Assist a voter to vote their ballot

- 1** Carefully **read all instructions** on the ballot to the voter.
- 2** **Check the back** of the ballot for additional election contests.
- 3** **Explain** to the voter that if they vote for more candidates than allowed, or if they vote both Yes and No on a measure, it will not count for that candidate or measure.

The voter is **not required to vote on every contest**. Do not force the voter to vote on all candidate contests or measures on the ballot. Those they vote on will still count.

! **Respect the voter's right to privacy.** Do not share how the voter voted with anyone.



Assist the voter to complete a Signature Stamp Attestation form if:

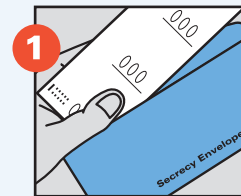
- the voter is unable to sign their registration
- the voter is unable to sign their return identification envelope

Contact the voter's County Elections Official to obtain a Signature Stamp Attestation form.

Check for errors

- Make sure the voter has accurately completed their ballot.
- Do not change the vote unless the voter you are assisting asks you to do so.
- Do not make any marks outside of the ovals or boxes.
- Do not coerce or pressure the voter to vote in a certain way or for a certain candidate.
- Offer to correct any stray marks made by the voter to indicate the voter's true intent.

Assist a voter to return their ballot

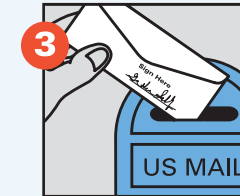


1 Insert the ballot inside the secrecy envelope and seal it.



2 Insert the secrecy envelope inside the return identification envelope and seal it.

Have the voter **sign** the return identification envelope.



3 Immediately return the ballot by mail or by dropping it off at a County Elections Office or an official ballot dropsite.

Assist the voter to request a replacement ballot if:

- the voter makes a mistake
- the voter loses their ballot
- the ballot is damaged or spoiled
- for any other reason

☎ Call your County Elections Office or **1 866 673 VOTE / 673 8683** to request a replacement ballot.

Assist a voter

to register

The voter can register to vote at:

- oregonvotes.gov
- any County Elections Office
- the Secretary of State's Office
- any Department of Motor Vehicles (DMV)

to vote their ballot

- 1** **Read all instructions** to the voter
- 2** **Check the back** of the ballot
- 3** **Explain**
 - Do not vote for more options than allowed per contest.
 - You do not have to vote on every contest. Those contests you vote on will still count.

to return their ballot

- 1** **Insert the ballot** into the secrecy envelope and seal it.
- 2** **Insert the secrecy envelope** into the return identification envelope and have the voter sign it.
- 3** **Immediately return the ballot.**

☎ **Call** your County Elections Office or **1 866 673 VOTE / 673 8683** to request a replacement ballot.